

PRODUCT SPECIFICATION SHEET

Product Code: AFHZ1000SMK01
Brand Code: TRUSENS
Description: TRUSENS Z1000 HEPA FILTER SMOKE
Category: BUSINESS MACHINES

Tagline

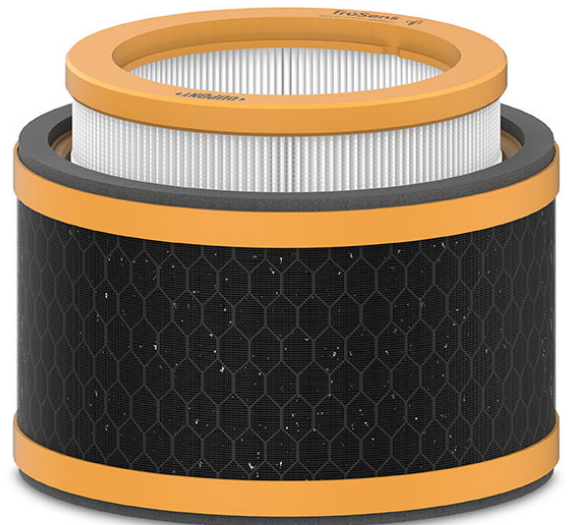
Delivers Cleaner Air So You Can Trust The Air You Breathe.

Catalogue Copy

This Z100 filter drum is engineered with an increased amount of activated carbon to help eliminate odours and airborne VOCs. In addition, a True HEPA filter captures common pollutants in the air. Compatible with all Z1000 (Small) TruSens Air Purifiers.

Features and Benefits

- This combination filter has 3 levels of filtration to defend against odours. It includes an activated carbon filter, a True HEPA filter and a durable mesh prefilter.
- The activated carbon filter helps combat cooking and cleaning odours
- It reduces airborne VOCs such as ammonia, acetone and formaldehyde
- The True HEPA filter is used to captures up to 99.97% of common pollutants
- 360 degree filtration draws in air from all directions to collect pollutants from around the room
- The filter is at the core of purifying your air & replacement is essential for optimal performance
- It is recommended to replace the Smoke HEPA Drum every 12 to 15 months, depending on usage
- It is recommended to replace the Odour & VOC Carbon Filter every 3 to 4 months, depending on usage
- Change indicator glows red on your air purifier when the filter needs to be replaced



Dimensions

W X L X H ()	0x0x0
Gross Weight ()	0
Product Barcode	
Unit of Measure	
Minimum Order Quantity	1

Inner Carton Dimensions

Inner Unit Quantity	0
W X L X H ()	0x0x0
Gross Weight ()	0
Inner Barcode	

Outer / Shipper Carton Dimensions

Outer Carton Quantity	0
W X L X H ()	0x0x0
Gross Weight ()	0
Outer Carton Barcode	

Shipping Information

Lowest Possible Unit	
----------------------	--

General Product Information

Variant	SMOKE
Layers/Pallet	5
Cases/Layer	72

NEW SOUTH WALES 2 Coronation Avenue Kings Park NSW 2148 T: 02 9695 2500	VICTORIA 718 Geelong Rd Brooklyn VIC 3012 T: 03 8348 4800			WESTERN AUSTRALIA 23 Marriott Road Jandakot WA 6164 T: 08 9456 0100	NEW ZEALAND 29 Pukekiwiriki Pl Highbrook Business Park East Tamaki Auckland 2013 T: 09 633 2288
--	--	--	--	--	---