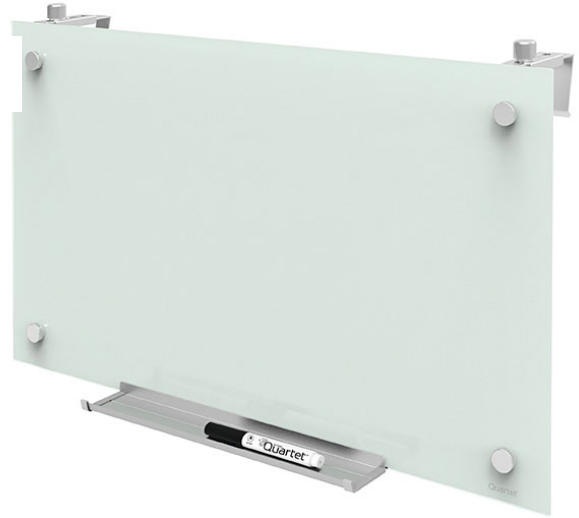


PRODUCT SPECIFICATION SHEET

Product Code: QTPDEC2414
Brand Code: QUARTET
Description: QUARTET GLASS BOARD INFINITY 355X610MM CUBICLE
Category: BOARDS AND DISPLAY PRODUCTS



Tagline

Great ideas start here

Catalogue Copy

Stay organized with a personal-Sized glass dry-Erase board. The magnetic glass board surface is durable and infinitely reusable to serve as an ideal note taking solution for your cubicle.

Features and Benefits

- Tempered glass dry-Erase board will not stain or ghost to ensure clean erasability
- Glass is magnetic and offers a smooth writing surface. Use with dry-Erase makers and rare earth magn
- Frameless board design is sleek and attractive
- 610 X 335mm board size with a 16:9 aspect ratio fits perfectly in cubicles with low walls and can
- Writing in all colors is easily visible on the white glass board surface. Glass is easy to keep clea
- Two mounting hardware sets included: adjustable brackets to hang board over cubicle walls and wall m
- Magnetic glass cubicle board comes with an aluminum accessory tray, 1 quartet dry-Erase marker and 2
- Limited 15 year warranty

Dimensions

W X L X H (mm)	413x749x51
Gross Weight (g)	3615
Product Barcode	034138299852
Unit of Measure	PC
Minimum Order Quantity	1

Inner Carton Dimensions

Inner Unit Quantity	0
W X L X H ()	0x0x0
Gross Weight ()	0
Inner Barcode	

Outer / Shipper Carton Dimensions

Outer Carton Quantity	0
W X L X H ()	0x0x0
Gross Weight ()	0
Outer Carton Barcode	

Shipping Information

Lowest Possible Unit	PC
----------------------	----

General Product Information

Variant	INFINITY 355X610MM CUBICLE
Layers/Pallet	20
Cases/Layer	4

NEW SOUTH WALES 2 Coronation Avenue Kings Park NSW 2148 T: 02 9695 2500				WESTERN AUSTRALIA 19 Pilatus Street Jandakot WA 6155 T: 08 9456 0100	NEW ZEALAND 29 Pukekiwiri PI Highbrook Business Park East Tamaki Auckland 2013 T: 09 633 2288
----------------------------------------------------------------------------------	--	--	--	-------------------------------------------------------------------------------	-----------------------------------------------------------------------------------------------------------