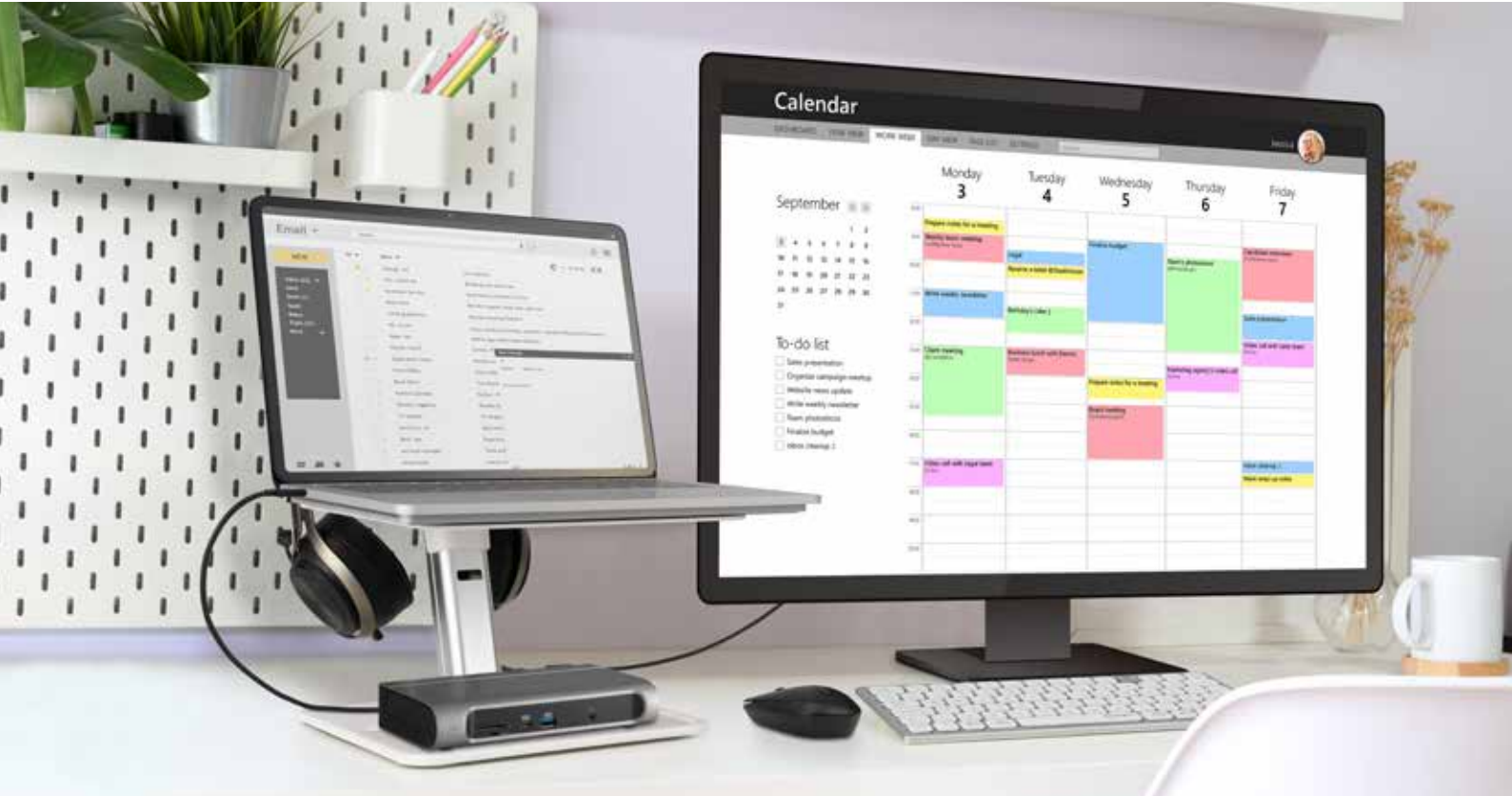


# Machines & Technology Solutions



For all your Technology Accessories needs, find out more on pages 11-15



## Kensington® SMARTFIT LAPTOP RISER

The SmartFit Organising Laptop Riser is an all-in-one solution to manage your laptop's desktop setup. Solid construction prides a sturdy, stable solution with a substantial 10Kg weight capacity. SmartFit Height Adjustment allows you to find your ideal height setting, with adjustable platform. Includes a Headphone/Headset Hanger, Cable Management, Non-Slip Rubber Base and a ventilated platform keeps the laptop from overheating

Product Code	Description
K50826WW	SMARTFIT ORGANISING LAPTOP RISER

# MACHINES & TECHNOLOGY **SOLUTIONS**

---

## TABLE OF CONTENTS

---

<b>Professional Video Conferencing</b>	03
<b>Shredders</b>	04
<b>Laminators</b>	06
<b>Binding Machines</b>	08
<b>Trimmers, Guillotines &amp; Folding</b>	09
<b>Staplers, Punchers &amp; Sharpeners</b>	10
<b>Technology</b>	11
<b>Boards</b>	16
<b>Floor Mats &amp; Sit Stand Solutions</b>	18
<b>Wellness</b>	19

# Kensington®

## Experience Kensington's Professional **Video Conferencing Solution**

### The Key to Getting More Work Done

Spend more time presenting and less time troubleshooting with the complete Kensington Professional Video Conferencing experience. Complete with webcams, lighting and professional stands to deliver the right angles, adjustable positioning and maximum stability for the ultimate video conferencing experience.



**K81176WW**

W2050 Pro 1080p  
Auto Focus Webcam



**K81175WW**

W2000 1080p  
Auto Focus Webcam



**K80250WW**

W1050 1080P  
Fixed Focus Webcam



**K83450WW**

H1000 USB-C  
On-Ear Headset



**K83451WW**

H2000 USC-C  
Over-Ear Headset



**K83452WW**

H3000 Bluetooth  
Over-Ear Headset



**K87653WW**

L1000 Bicolour  
Ring Light



**K87654WW**

A1000  
C-Clamp



**K87651WW**

A1010  
Desk Stand



**K87652WW**

A1020  
Boom Arm





## Momentum Crosscut Shredders

### The Power to Shred More

With up to 4 hours of continuous run time, Momentum Shredders are the ones you can rely on. Perfectly designed to cater to any work environment, whether that's the home or large office.



**X406**

2104569AU



**X308**

2104570AU



**X410**

2104571AU



**X312**

2104572AU



**X415**

2104576AU



**X420**

2104578AU

Model	X406	X308	X410	X312	X415	X420
CUT TYPE	Cross	Cross	Cross	Cross	Cross	Cross
CUT SIZE	4x30mm	5x42mm	4x28mm	5x42mm	4x40mm	4x40mm
SECURITY LEVEL	P4	P3	P4	P3	P4	P4
CAPACITY (80GSM)	6 Sheets	8 Sheets	10 Sheets	12 Sheets	15 Sheets	20 Sheets
FEED OPENING	220mm	220mm	220mm	220mm	223mm	230mm
BIN VOLUME	15L	15L	23L	23L	23L	30L
RUN TIME	3 mins	3 mins	6 mins	6 mins	2 hours	4 hours
SHREDS PAPER-CLIPS/STAPLES	✓	✓	✓	✓	✓	✓
WARRANTY	2 Years	2 Years	2 Years	2 Years	2 Years	2 Years
DIMENSIONS MM'S (W X H X D)	325 x 343 x 229	325 x 343 x 229	356 x 423 x 238	356 x 423 x 238	370 x 465 x 279	406 x 594 x 320



## Optimum AutoFeed+ Automatic Shredders

### AutoFeed Technology

Not enough time to stand at the paper shredder? When bulk shredding, Rexel Optimum AutoFeed+ Shredders are proven to save up to 98%\* of time hand feeding documents into a standard shredder. So why wait, when you can Auto shred with Rexel?



Stack up to 750 sheets



Shut



Done



750X



600M  
600X



300M  
300X



225M  
225X



150X



100M  
100X



50X

Model	750X	600M/600X	300M/300X	225M/225X	150X	100M/100X	50X
<b>Micro Cut Code</b>		2020600MAU	2020300MAU	2020225MAU		2020100MAU	
<b>Cross Cut Code</b>	2020750XAU	2020600XAU	2020300XAU	2020225XAU	2020150XAU	2020100XAU	2020050XAU
<b>Sheets AutoFeed</b>	750	600	300	225	150	100	50
<b>Sheets Manual Feed</b>	20	10/15	8/10	8/10	8	6/8	6
<b>P-Security</b>	P-4	P-5/P-4	P-5/P-4	P-5/P-4	P-4	P-5/P-4	P-4
<b>Cut Type</b>	Cross Cut	Micro/Cross	Micro/Cross	Micro/Cross	Cross	Micro/Cross	Cross Cut
<b>Bin Size</b>	140L	110L	60L	60L	44L	34L	20L
<b>Run Time</b>	4 hours	4 hours	1 hour	30 min	30 min	20 min	10 min
<b>PIN Lock</b>	✓	✓	✓	-	-	-	-
<b>Shreds Staples/Paper-clips/Credit Cards</b>	✓	✓	✓	✓	✓	✓	✓
<b>Anti-Jam Technology</b>	✓	✓	✓	✓	✓	✓	✓
<b>Infra Red Bin Full Sensor</b>	✓	✓	✓	✓	✓	✓	✓
<b>Dimensions mm's (W x H x D)</b>	510 x 1062 x 570	675 x 1130 x 750	350 x 650 x 490	500 x 830 x 550	440 x 690 x 505	365 x 530 x 430	430 x 490 x 520

\*based off the 750X compared to manual feed shredders

## GBC FOTON<sup>®</sup> 30

The first fully automated desktop laminator that feeds, laminates and trims with the touch of a button. FOTON 30 revolutionises the way you laminate. Equipped with built-in auto feeder and trimmer, FOTON 30 delivers automatic lamination - freeing up your time for other activities.

### Load and Go operation!

FOTON 30 starts automatically after warm-up. Load papers. Push button. Walk away.

### Hands Free Lamination

Integrated 30 page sheet feeder with de-skew ensures documents are straight when entering the laminator. No more feeding pouches one at a time.

### Easy Supply Loading

Easy to load, self-threading cartridge makes changing film simple.



### GBC FOTON 30

The world's first fully automatic desktop laminator with auto-cartridge. FOTON30230AU



**BONUS**

Buy 1x 4410023,  
get 1x 4410026 free



### GBC FOTON 30 RELOADABLE CARTRIDGES

Reloadable Cartridges are an easy to load self-threading cartridge that make changing film simple. Simply open the locking arms, place film and plastic transfer piece into carrier and close the locking arms to reload film.

Product Code	Description
4410023	FOTON RELOAD CARTRIDGE & FILM 75MIC
4410025	FOTON RELOAD CARTRIDGE & FILM 125MIC
4410026	FOTON CARTRIDGE FILM REFIL 75MIC
4410028	FOTON CARTRIDGE FILM REFIL 125MIC



Scan here  
for more info

## Flawless, effortless lamination

The desktop-dwelling powerhouse automates up to 30 sheets at once and delivers up to 230 sheets per cartridge. Hitting "Run" automatically straightens all pages, detects film thickness, controls spacing, laminates the sheets and trims them with perfect precision.



Find out more on  
[www.accobrand.com.au](http://www.accobrand.com.au)





## SG300 A4 & A3 LAMINATORS

Ideal for small office users. Laminate documents, photos, posters or children's artwork in no time. 300mm per minute laminating speed and 4 minute warm up time.

Product Code	Description
49324R	SG300 LAMINATOR A4
49323R	SG300 LAMINATOR A3



## FUSION 1100L A4 & A3 LAMINATORS

Sleek and Easy-To-Use laminator, protects and preserves documents and photos. 330mm laminating speed. 3 minute warm up time. Accepts 75-125 micron pouches.

Product Code	Description
BLF1100LA4	LAMINATOR FUSION A4 1100L
BLF1100LA3	LAMINATOR FUSION A3 1100L



## FUSION 3000L A4 & A3 LAMINATORS

Sureflow Anti-Jam technology. 500mm per minute laminating speed. 1 minute warm up time. Accepts 75-125 micron pouches.

Product Code	Description
BLF3000LA4	LAMINATOR FUSION A4 3000L
BLF3000LA3	LAMINATOR FUSION A3 3000L



## FUSION 7000L A3 LAMINATOR

Digital control screen with automatic pouch thickness detection. Sureflow Anti-Jam technology. 1400mm per minute laminating speed. 1 minute warm up time. Accepts 75-250 micron pouches.

Product Code	Description
BLF7000LA3	LAMINATOR FUSION A3 7000L



## LAMINATING POUCHES

Protect your documents with these Rexel pouches, multiple sizes and thicknesses to choose from.

Product Code	Description
41621	LAMINATING POUCH GLOSS A4 2X75M PK100
46310	LAMINATING POUCH GLOSS A4 2X100M PK100
41623	LAMINATING POUCH GLOSS A4 2X125M PK100
41616	LAMINATING POUCH GLOSS A3 2X75M PK100



## SIGNATURE LAMINATING POUCHES

GBC laminating pouches provide superior document protection. Featuring the highest quality materials, GBC pouches are available in a variety of thicknesses and sizes.

Product Code	Description
BL80MA4	A4 80 MICRON POUCHES SIGNATURE 100PK
BL125MA4	GBC A4 125 MICRON POUCH SIGNATURE 100PK
BL80MA4MATT	A4 80 MICRON POUCHES MATT 100PK
BL80MA3	A3 80 MICRON POUCHES SIGNATURE 100PK

# Binding Machines



## COMBBIND A20 BINDER

The CombBind A20 is ideal for offices with moderate binding requirements. Unique gravity fed low force paper punching makes binding documents easier.

Product Code	Description
BMNC20	GBC COMBBIND A20 MACHINE



## COMBBIND A25 BINDER

The CombBind A25 is ideal for offices with regular/Frequent binding requirements. Quickstep work flow guide for simple and intuitive operation.

Product Code	Description
BMNC25	GBC COMBBIND A25 MACHINE



## COMBBIND C450E ELECTRIC BINDER

Ideal for offices with frequent binding requirements. One touch electric punch makes the binding process even easier. Solid construction provides longer life and greater durability.

Product Code	Description
BMC450E	GBC COMBBIND C450E MACHINE ELECTRIC



## COMBBIND C150 & C800 PRO BINDERS

Robust metal construction provides longer life and greater durability. Perfect for busy offices and schools that require frequent binding. Easy to use with large capacity cippings tray.

Product Code	Description
BMC150	GBC COMBBIND C150 PRO MACHINE
BMC800	GBC COMBBIND C800 PRO MACHINE ELECTRIC

Function	A20	A25	C450E	C150	C800
BINDING CAPACITY	330	450	450	450	450
PUNCHING CAPACITY	20	25	25	20	20
OPERATION MODE	Manual	Manual	Electric	Manual	Electric



## BINDING CONSUMABLES

Product Code	Description
BCL300BK100	LEATHERGRAIN COVER 300GSM PK100 BLACK
BCL300N100	LEATHERGRAIN COVER 300GSM PK100 NAVY
BCP20CLR100	BINDING COVER 200M A4 CLEAR PK100
45545	BINDING COMBS 12.5MM BLACK BX100



## BINDING CONSUMABLES

Product Code	Description
BEP12BK100	PLASTIC 21 LOOP 12MM BLACK 100PK
BCL300BK100	LEATHERGRAIN COVERS BLACK 100PK
BCP25CLR100	CLEAR COVERS 250 MICRON A4 100PK



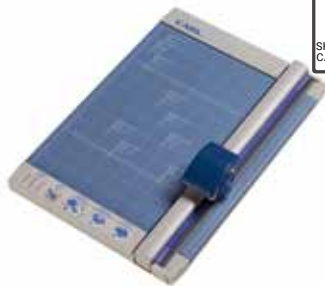


**CARL**

## RBT-12N PERSONAL PAPER TRIMMER

For scrapbooking perfection, this is the ultimate in personal trimmers. It features a pivoting magnet-lock rail for maximum manageability and the integrated swing-out ruler gives you more measuring space in a compact unit.

Product Code	Description
701200	CARL TRIMMER A4 RBT12 5 SHEETS

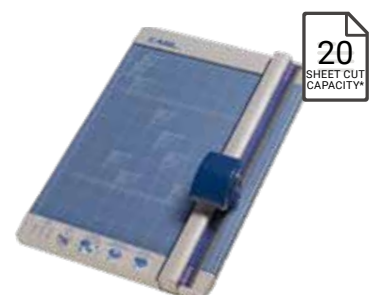


**CARL**

## RT PAPER TRIMMERS

These versatile trimmers have applications in both the commercial and craft markets that ensures safe and precise cutting made easy. Suitable for paper up to 310mm and up to 10 sheets.

Product Code	Description
700212A	CARL RT200 A4 PAPER TRIMMER 10 SHEETS
700218A	CARL RT218 A3 PAPER TRIMMER 10 SHEETS



**CARL**

## DC PAPER TRIMMERS

Heavy duty and durable construction designed for cutting up to 32 sheets (20 Sheets DC250) with a Fluorescent and Luminous cutting guide for increased accuracy.

Product Code	Description
700210N	DC210N A4 TRIMMER 32 SHEETS
700230N	DC230N A3 TRIMMER 32 SHEETS
702500	CARL DC250 A2 PAPER TRIMMER 20 SHEETS



**Rexel**

## CLASSICCUT TRIMMERS

Trim your documents with the Rexel ClassicCut Trimmer range. With multiple sizes available, it is a great choice for trimming papers, photos, and artwork where you can create a wide range of projects, crafts, and handouts.

Product Code	Description
20201208P	CLASSICCUT TRIMMER FIXED BLACK 1208P A4
20201525G	CLASSICCUT TRIMMER MULTICUT 1215P A4
20201215P	CLASSICCUT TRIMMER MULTICUT 1215P A4
20201515P	CLASSICCUT TRIMMER MULTICUT 1515P A4
20201715P	CLASSICCUT TRIMMER MULTICUT 1715P A3



**Rexel**

## CLASSICCUT GULLOTINES

The ClassicCut Guillotine has EdgeGlow LED light guide to help get the perfect cut every time. Simply lift the blade and line your paper up with the light guide for clear and accurate trimming. It is available with a wood surface or a glass surface.

Product Code	Description
20201210W	CLASSICCUT GUILLOTINE WOOD 1210W A4
20201710W	CLASSICCUT GUILLOTINE WOOD 1710W A3
20201725G	CLASSICCUT GUILLOTINE GLASS 1725G A3

**IDEAL**

## FOLDING MACHINE 8306

LED display with fold counter. Can do single, letter, zigzag and double parallel folds. Impressive fixed speed at 7,000 sheets/Hr (Single folding of a4 size stock). 150 sheet stacking capacity.

Product Code	Description
0364880	IDEAL 8306 FOLDING MACHINE





MANUAL



ELECTRIC



ELECTRIC  
HEAVY  
DUTY

## BOSTITCH SHARPENERS

The ultimate blend of performance, safety, and style for the classroom or studio. The Bostitch sharpeners are built to last and are the perfect sharpener for any setting. All sharpeners feature an antimicrobial protected brushed metal case for classroom survivability. Replacement cutter heads are available for purchase separately.

Product Code	Description
49555	SHARPENER ANTIMICROBIAL MANUAL
49551	CLASSROOM SHARPENER GLOW
EPS14HC	SUPER PRO ELECTRIC SHARPENER



25  
SHEET  
CAPACITY



80  
SHEET  
CAPACITY



45  
SHEET  
CAPACITY



### SUPREME ELECTRIC STAPLER

Allows for Effortless stapling. The Patented Cassette Stapling technology is ideal for high-frequency stapling situations.

Product Code	Description
25095210	STAPLER 5025E ELECTRIC BLACK/WHITE
20993411	STAPLER 5080E ELECTRIC RED/SILVER



### OPTIMA ELECTRIC STAPLER

A powerful electric stapler delivering neat, accurate stapling. Ideal for large paper stacks, intuitive user control ensures you are in charge of where and when the staple goes.

Product Code	Description
2104454AU	STAPLER OPTIMA 45 ELECTRIC



110  
SHEET  
CAPACITY



70  
SHEET  
CAPACITY



### HEAVY DUTY STAPLER

These robust, front loading, heavy duty staplers with their lever mechanism allow for high stapling capacity.

Product Code	Description
0275831	HEAVY DUTY STAPLER HD110
0275841	HEAVY DUTY STAPLER HD70



### POWER PUNCH

This powerful, accurate, high capacity 2-hole punch with a long comfort grip handle allows for extra leverage and reduced effort - 40% power saving. Punches up to 100 sheets of paper (80 gsm)

Product Code	Description
R8003	POWER PUNCH 2 HOLE



150  
PUNCHING  
CAPACITY



## Kensington®

### CHARGE & SYNC CABINET & ACCESSORIES

Kensington charge and sync cabinets provide a secure solution for laptops, tablets, Chromebooks and 2-in-1 hybrids, with optional locking mechanisms and cable management. Choose between charge, sync, and secure for Android and iOS devices; or charge and secure for Chromebooks, Windows, and Mac devices.

Product Code	Description
67862	CHARGE & SYNC CABINET-IOS & ANDROID
64415	CHARGE & SYNC CABINET FOR LAPTOPS & CHROMEBOOKS
67864	ACCESSORIES - USB/LIGHTING CABLES PK5
K65610WW	USB-A TO USB-C CHARGING CABLES



## Kensington®

### UH4000 USB 3.0 4 PORT HUB

With USB ports on laptops becoming a precious commodity, an external hub can be the answer to maintaining optimal productivity. The UH4000 USB 3.0 4-Port hub ensures you can connect all your peripheral desktop accessories so you can perform at your peak.

Product Code	Description
39121	UH4000 USB 3.0 4 PORT HUB
39124	CH1000 USB-C 4 PORT HUB
39122	UH4000C USB 3.0 4 PORT HUB WITH CHARGER

## Kensington®

### MAGNETIC PRIVACY SCREENS

Kensington privacy screens are an easy way to reduce chances of visual hacking by limiting the viewing angle by +/- 30°, which is convenient to hide personal or confidential information at your desktop.

Product Code	Description
K58351WW	PRIVACY SCREEN FOR 13" LAPTOPS
K58352WW	PRIVACY SCREEN FOR 14" LAPTOPS
K58353WW	PRIVACY SCREEN FOR 15.6" LAPTOPS
K58354WW	PRIVACY SCREEN FOR 21.5" MONITOR
K58355WW	PRIVACY SCREEN FOR 23" MONITOR
K58356WW	PRIVACY SCREEN FOR 23.8" MONITOR
K58359WW	PRIVACY SCREEN FOR 27" MONITOR



## Kensington®

### LAPTOP LOCKS

Kensington charge and sync cabinets provide a secure solution for laptops, tablets, Chromebooks and 2-in-1 hybrids, with optional locking mechanisms and cable management. Choose between charge, sync, and secure for Android and iOS devices; or charge and secure for Chromebooks, Windows, and Mac devices.

Product Code	Description
65020	MICROSAVER 2.0 KEYED LAPTOP LOCK
K60500WW	KEYED LOCK N17 2.0 DELL DEVICES
K65021WW	NANOSAVER SINGLE HEAD LOCK
K60600WW	SLIM COMBINATION LOCK
K65094WW	SLIM COMBINATION LOCK N17 2.0
K60603WW	SLIM NANOSAVER COMBINATION LOCK RESETTABLE



## Kensington®

### HI-FI USB-A HEADPHONES

The Kensington Hi-Fi Headphones are a comfortable and durable headset that provide high-quality stereo sound, a microphone designed to support voice clarity, and best-in-class comfort features.

Product Code	Description
97600	HI-FI USB-A HEADPHONES
97601	HI-FI USB-A HEADPHNS WITH MIC/PH
97602	HI-FI HEADPHONES
97603	HI-FI HEADPHONES WITH MICROPHONE
K97456WW	HI-FI USB-C HEADPHONES
K97457WW	HI-FI USB-C HEADPHONES WITH MIC
K33597WW	HI-FI HEADPHONES WITH MIC & VOL
K33065WW	HI-FI USB-A HEADPHONES MIC & VOL
K80100AP	MONO HEADSET WITH INLINE CONTROL





## Kensington®

### SMARTFIT® MONITOR STANDS

**SMARTFIT®** Position your monitor in line with your eyes to help reduce eye and neck strain. Featuring the SmartFit® System, these risers let you adjust the height to your personal comfort colour, by snapping risers into place.

**EXTRA WIDE** Designed to improve employee wellness and increase productivity. The Extra Wide Monitor Stand combines a durable and stylish design with the ergonomic benefits of raising your monitor height.

Product Code	Description
52785	SMARTFIT STANDARD MONITOR STAND
52786	SMARTFIT PREMIUM MONITOR STAND
55726	EXTRA WIDE MONITOR RISER BLACK
K54900AU	EXTRA WIDE MONITOR RISER WHITE



## Kensington®

### ERGOSOFT WRIST RESTS & MOUSEPADS

Ergonomist approved to support the optimal health, comfort and protection of your wrist through proper alignment, tailored dimensions, and a unique curved design that minimizes the impact of repetitive strain.

Product Code	Description
52799	ERGOSOFT WRIST REST STANDARD KEYBOARD
52802	ERGOSOFT WRIST REST STANDARD MICE
55888	ERGOSOFT MOUSEPAD BLACK



## Kensington®

### DOCKING STATIONS

The professionals' choice for universal docking solutions. With Kensington universal docking solutions, a single cable is all it takes to get a full desktop experience from your laptop.

Product Code	Description
33972	KTG SD3500 USB 3.0 DOCKING STATION
K33480AP	KTG SD4839P USB-C TRIPLE 4K 85W PD DOCK
K37060AP	KTG SD4849P 4K SCALABLE USB-C 100W DOCK
K37899WW	KTG SD5750T DUAL 4K 90W PD DFS DOCK

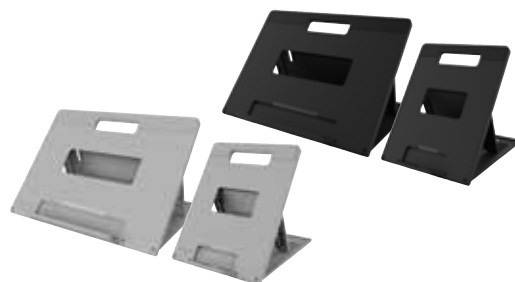


## Kensington®

### LAPTOP RISER

Kensington's Universal Tabletop Laptop Riser lets you raise your laptop to a comfortable viewing height while also cutting down on desktop clutter. Height adjusts from 15cm - 20cm; Angle adjusts from 0 - 45 degrees. Constructed from sturdy steel & aluminium, it supports any size laptop up to 16" with a max weight of 8kg

Product Code	Description
K50424WW	UNIVERSAL TABLETOP LAPTOP RISER SILVER



## Kensington®

### EASY RISER GO LAPTOP STANDS

By setting your monitor at the proper height that's in line with your eyes, lowering the chances you will suffer from aches and pain after spending long hours on the computer.

Product Code	Description
K50420WW	EASY RISER GO 17" LAPTOP STAND GREY
K50421WW	EASY RISER GO 14" LAPTOP STAND GREY
K50422WW	EASY RISER GO 17" LAPTOP STAND BLACK
K50423WW	EASY RISER GO 14" LAPTOP STAND BLACK



## Kensington®

### SMARTFIT® SOLEMATE FOOTRESTS

Improve posture, promote healthy circulation and support back and leg comfort with the SmartFit® SoleMate ergonomic foot rests. Ergonomically designed to promote wellness and support increased productivity through design and adjustability.

Product Code	Description
56150	ROCKING FOOTREST
52482	ADJUSTABLE FOOTREST
52789	SOLEMATE PLUS FOOTREST
K58303WW	SLIMLINE ROCKING FOOTREST







Kensington®

### PRO FIT® ERGONOMIC KEYBOARDS AND MICE

With its split and sloped keyboard with adjustable reverse tilt and built-in wrist rest, the ergonomist-approved Pro Fit® Ergo Wireless Keyboard positions your hands for improved comfort.

Product Code	Description
K75400US	WIRED ERGO KEYBOARD
K75401US	DUAL WIRELESS ERGO KEYBOARD - BLACK
K75404WW	DUAL WIRELESS ERGO MOUSE - BLACK
K75406US	DUAL WIRELESS ERGO DESKTOP SET - BK
K75407US	DUAL WIRELESS ERGO DESKTOP SET - GY



Kensington®

### SURETRACK™ DUAL WIRELESS MOUSE

Expect more from your wireless mouse. The SureTrack™ Dual Wireless Mouse amplifies your productivity. This is the first lightweight mouse to offer adaptable wireless connectivity options while also providing precision tracking on even the most difficult surfaces.

Product Code	Description
K75298WW	SURETRACK DUAL WIRELESS MOUSE BLACK
K75350WW	SURETRACK DUAL WIRELESS MOUSE BLUE
K75351WW	SURETRACK DUAL WIRELESS MOUSE GREY
K75352WW	SURETRACK DUAL WIRELESS MOUSE RED
K75353WW	SURETRACK DUAL WIRELESS MOUSE WHITE



Kensington®

### PRO FIT® WIRELESS MID AND FULL SIZED MICE

The Kensington Pro Fit® Wireless Mice feature an ergonomic, right-handed shape with a soft rubber grip for all day comfort. It features a high-definition optical sensor with a pointer speed quick-select button for enhanced productivity. It uses 2.4 GHz wireless for long range with minimal interference.

Product Code	Description
72354	PRO FIT WIRELESS MID SIZE MOUSE
72370	PRO FIT WIRELESS FULL SIZE MOUSE



Kensington®

### PRO FIT® WASHABLE KEYBOARD & MICE

The Pro Fit® Wired Washable Keyboard and Mouse Set, with its waterproof, easy-clean, rugged design, is ideal for maintaining a hygienic surface and cleaning up drips and spills, without sacrificing performance. IP67 mouse rating and IPx6 keyboard rating means this set can easily stand up to frequent cleaning with water and solvents.

Product Code	Description
K70316US	PRO FIT WASHABLE DESKTOP SET



Kensington®

### PRO FIT® ERGO VERTICAL WIRELESS MICE

The Pro Fit® Ergo Vertical Wireless Mouse, with its natural handshake position, improves wrist and forearm posture for better comfort and muscle support.

Product Code	Description
K75501WW	VERTICAL WIRELESS MOUSE BLACK RIGHT HANDED
K75520WW	VERTICAL WIRELESS MOUSE GREY RIGHT HANDED

Kensington®

### PRO FIT® LOW-PROFILE WIRELESS KEYBOARD AND MOUSE AND DESKTOP SET

The Kensington ProFit® wireless keyboard features a low-profile, full-size layout with multimedia keys for enhanced productivity and quick access to frequently used applications and files while the ambidextrous mouse is designed to provide all-day comfort for the right or left hand, and provides an optical sensor with 1200 DPI for precise control.

Product Code	Description
75229	PRO FIT LOW PROF WIRELESS KEYBOARD





## Tablet Holder - Table

Premium quality desktop tablet holder suitable for the professional use of tablets in offices, at reception desks and in sales/exhibition rooms. The elegant design and superior stability make this an ideal tool for presentations.

- Adjustable to suit all tablets 7" - 13"
- Rotatable: 360° with snap in points every 90°
- Use in portrait or landscape format
- Aperture in the holder for easy charging
- Includes locking device with key
- Flexible tilt angle adjustment of the arm 0° to 88°
- Quality sheet steel, aluminium & ABS construction
- 155 x 242 x 183mm (W x H x D)
- Designed and manufactured in Germany

Product Code	Description
893023	DURABLE TABLET HOLDER TABLE



## TABLET HOLDER - TABLE CLAMP

All the premium features of the Tablet Holder Table with the extra Table Clamp. The flexible support arm holds the tablet at the desired position while sitting comfortably at your desk.

- Flexible tilt angle adjustment of the arm -6° to 46°
- Table column height 295mm, up to 40mm table top thickness
- 100 x 440 x 210mm (W x H x D)

Product Code	Description
893123	DURABLE TABLET HOLDER TABLE CLAMP



## TABLET HOLDER - FLOOR STAND

The timeless tablet floor stand is a first-class tool for presentations in public buildings, at trade fairs and exhibitions, in hotels and restaurants, car dealerships etc... With its professional design, the Tablet Floor Stand fits into any environment.

Product Code	Description
893223	DURABLE TABLET HOLDER FLOOR



## TABLET HOLDER - WALL MOUNT

The wall-mounted tablet holder has been designed for use in many different applications including trade fairs, office areas and sales and exhibition rooms supporting the use of tablets for information purposes. The holder's low-key design enables unobtrusive, flat wall mounting.

Product Code	Description
893323	DURABLE TABLET HOLDER WALL





## Kensington®

### SMARTFIT® ERGO MONITOR ARMS

Finding the correct ergonomic height for your monitors and adjusting their distance is easy, thanks to the sturdy, stable SmartFit® Ergo Monitor Arms. Clear valuable desk space while improving ergonomics.

Wide adjustment range delivers  $\pm 90^\circ$  swivel,  $\pm 180^\circ$  rotation (for landscape or portrait orientation),  $\pm 45^\circ$  monitor tilt adjustment, and up to 399mm arm extension.

Sturdy metal pre-installed C-clamp and grommet fastener are easy to install and won't damage or mark the desk or table. Each arm is compatible with displays up to 32" and 8kgs.

Product Code	Description
K55408WW	SMARTFIT® ERGO SINGLE MONITOR ARM
K55409WW	SMARTFIT® ERGO DUAL MONITOR ARM



## Kensington®

### SMARTFIT® SPACE-SAVING MONITOR ARMS

Finding the correct ergonomic monitor adjustment is easy — even for desks with a shallow depth — with the SmartFit® Space-Saving Monitor Arms.

Easy, nonpermanent installation includes necessary tools and a preinstalled C-clamp that faces the front of the desk, making installation much simpler, especially in tight spaces (optional grommet mount included).

Product Code	Description
K55512WW	SMARTFIT® MONITOR ARM SPACE SAVING SINGLE
K55513WW	SMARTFIT® MONITOR ARM SPACE SAVING DUAL



## Kensington®

### SMARTFIT® ONE-TOUCH MONITOR ARMS

Improve posture, promote proper eye alignment and support neck and shoulder comfort with the Kensington SmartFit® One-Touch Height Adjustable Monitor Arms.

Ergonomically designed to promote wellness and increase productivity, the monitor arms incorporate Kensington's patented SmartFit® technology to simplify proper fit and allows users to adjust the height, depth and angle of their monitors for individualised comfort.

Product Code	Description
K55470WW	SMARTFIT® ONETOUCH SINGLE MONITOR ARM WHITE
K55471WW	SMARTFIT® ONE TOUCH DUAL MONITOR ARM WHITE
K59600WW	SMARTFIT® ONETOUCH SINGLE MONITOR ARM BLACK
K59601WW	SMARTFIT® ONETOUCH DUAL MONITOR ARM BLACK



## Kensington®

### BLUETOOTH PRESENTER

The latest in wireless innovation, this low-energy pairing between your device and presenter frees up a valuable USB port and offers a range of up to 30 feet so you can move freely during a presentation

Product Code	Description
72448	KTG PRESENTAIR PRO BLUETOOTH PRESENTER



# Slim. Sleek. Subtle.

The Quartet Penrite Slimline Series offers a sleek, modern finish that is guaranteed to be the centrepiece of any room. The slimline design sits flush with the wall, so there are no visible mounting hardware.

All you see is the sleek, unobtrusive board which is perfect for collaboration.



## PENRITE SLIMLINE SERIES

The next generation of premium quality whiteboards! This sleek, minimalist boards are perfect for shared work environments requiring enhanced performance!

Product Code	Description
QTMWP1209A	SLIMLINE MOBILE WHITEBOARD 1200X900MM
QTMWP1509A	SLIMLINE MOBILE WHITEBOARD 1500X900MM
QTMWP181A	SLIMLINE MOBILE WHITEBOARD 1800X1200M
QTPWP0906A	SLIMLINE MAGNETIC WHITEBOARDS 900X600MM
QTPWP1209A	SLIMLINE MAGNETIC WHITEBOARDS 1200X900MM
QTPWP181A	SLIMLINE MAGNETIC WHITEBOARDS 1800X1200MM
QTPWP241A	SLIMLINE MAGNETIC WHITEBOARDS 2400X1200MM
QTPWI121A	SLIMLINE PORCELAIN WHITEBOARD 1200X1200MM
QTPWI151A	SLIMLINE PORCELAIN WHITEBOARD 1500X1200MM



## INFINITY GLASS BOARD

Magnetic glass dry-erase boards provide long term durability with a modern aesthetic appeal. The glass surface will not stain, ghost, scratch or dent despite heavy use, and dry-erase markers glide evenly over the board surface for smooth writing.

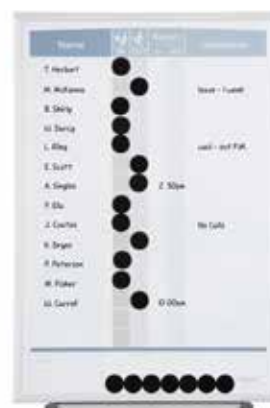
Product Code	Description
QTG4836F	GLASS BOARD 1200X915MM FROST
QTG4836W	GLASS BOARD 1200X915MM WHITE
QTG7248W	GLASS BOARD 1810X1220MM WHITE
QTG2418W	GLASS BOARD 450X600MM WHITE



## FLIPCHART EASEL

Quartet display easels and accessories are ideal for presenting artwork, sketches and more to large audiences and in public places.

Product Code	Description
QTBASFCEASEL	FLIPCHART EASEL MAGNETIC



## PLANNER BOARD

Keep track of your employees itinerary with this durable magnetic in/out board. The smooth writing surface is perfect for notations and the magnetic dots quickly identify who is in the office and who is not.

Product Code	Description
QT33703	PLANNER BOARD MATRIX IN/OUT 280X410MM
QT33704	PLANNER BOARD MATRIX IN/OUT 410X580MM
QT33705	PLANNER BOARD MATRIX IN/OUT 580X865MM
QTTerm1209	PENRITE TERM PLANNER 900X1200MM
QTYEAR0906	PENRITE PLANNER BOARD YEAR 600X900MM
QTYEAR1209	PENRITE YEAR PLANNER 1200X900MM



## PROJECTOR SCREENS

Nobo Projector Screens have a brilliant matt white surface with a distinctive black border to provide a sharp, detailed image. Wide viewing angle for excellent all-round visibility.

Product Code	Description
1901956	PORTABLE SCREEN 4:3 1620X1220MM
1902392W	WALL SCREEN 16:10 1750X1090MM
1902393W	WALL SCREEN 16:10 2000X1350MM
1902394W	WALL SCREEN 16:10 2400X1600MM
1902395W	TRIPOD SCREEN 16:10 1500X1000MM
1902396W	TRIPOD SCREEN 16:10 1750X1150MM
1902397W	TRIPOD SCREEN 16:10 2000X1310MM

# Floor mats & Sit Stand Solutions



## CHAIRMAT ECONOMY & DURAMAT - CARPET

PVC chair mats for low pile carpets up to 6mm thick, providing protection to commercial pile carpets for the price-conscious shopper. Phthalate-free & clear PVC formula for safety, clarity, and durability. Scuff and slip-resistant textured top surface. Includes grippers for stay-put performance.

Product Code	Description
87440	CHAIRMAT ECONOMY 91X121 SMALL
87445	CHAIRMAT ECONOMY 114X134 LARGE
87220	CHAIRMAT DURAMAT 91X121 SMALL



## CHAIRMAT - HARD FLOOR

The ultimate in surface protection due to its incredible durability, high clarity, and rigidity. Made from extra strong polycarbonate. Polycarbonate is the same material used in bulletproof glass and aircraft windows! Perfect for protecting hard floors from heavy machines, chairs, and high-traffic areas. Fire-resistant, odorless, and emission-free. Super smooth surface for sliding on-off and around with ease. Smooth back for hard floors.

Product Code	Description
87195	CHAIRMAT POLYCARBONATE 120X150 RECTANGLE
87194	CHAIRMAT POLYCARBONATE 90X120 RECTANGLE



## 6000X ANTI-MICROBIAL & ANTI-FATIGUE 58X170CM MAT

The ultimate standing comfort and body support that reduces the strain on feet, legs knees & back joints that can be caused through prolonged standing. Ideal for use with extra-width standing desks, at serving counters, and reception desks. Advanced ergonomic standing surface with multiple ribbed design features. Contains anti-microbial content to protect the mat surface from microbial deterioration.

Product Code	Description
MBG6000XBLK	AFS-TEX 6000X ANTI-MICROBIAL & ANTI-FATIGUE BLACK 58X170CM



## CHAIRMAT DELUXE - CARPET

Affordable, long-lasting floor protection for the home and office. Made with a phthalate-free formulation for safety. This clear and durable chair mat is great for medium pile carpets up to 12mm thick. Scuff and slip-resistant textured top surface. Includes grippers for stay-put performance.

Product Code	Description
87101	CHAIRMAT DELUXE 91X121 SMALL
87105	CHAIRMAT DELUXE 114X134 LARGE



## ANTI-FATIGUE MATS

A totally new and unique anti-fatigue system range that provides the ultimate combination of standing comfort and body support. These mats reduce pressure on the body from 40% (AF2000) up to 54% (AF5000). Maximise comfort and increase productivity in the home or office

Product Code	Description
FX2KBK4060	2000 ANTI-FATIGUE 40X60CM MAT BLACK
FX2KGY4060	2000 ANTI-FATIGUE 40X60CM MAT GREY
FX5000BK	5000 ANTI-FATIGUE 66X90CM MAT BLACK



## Kensington SMARTFIT™ SIT/STAND WORKSTATION

The SmartFit® Sit/Stand desk provides an efficient and safe way to convert your desk into a healthy Sit-Stand workstation. A two-tiered structure, comes fully assembled, with an easily adjustable and space saving design.

Product Code	Description
52804	SIT STAND WORKSTATION



## Z2000AU AIR PURIFIER

Suitable for rooms and medium areas up to 35sq m. Featuring a unique SensorPod that detects pollutants from across the room, not just by the purifier. TruSens automatically adjusts its fan speed (while in Auto mode), delivering cleaner air throughout your space, conveniently displaying your air quality with the illuminated LED display on the Air Purifier.

The TruSens Z-2000 includes 4 levels of purification with the included pre-filter, carbon filter, HEPA filter and UV-C lamp.

Product Code	Description
Z2000AU	Z2000 AIR PURIFIER

## Is it time to change your filter?

The indicator light will display on your air purifier when it's time to change your filters



### Standard Filter

The Standard filters are a combination filter has been engineered to capture microscopic particles, allergens and volatile organic components (VOC's), and odorous gases



### Pet Filter

The Pet filter with True HEPA helps capture up to 99.97% of pet dander and hair and helps eliminate common pet odours so you can breathe cleaner air in your home.



### Allergy & Flu Filter

Boost protection from airborne viruses, flu and allergens. The Allergy & Flu Antiviral True HEPA filter captures 99% of airborne allergens and viruses, including the H1N1 virus.



### Odour Filter

The Odour filter with True HEPA is engineered with an increased amount of activated carbon. Carbon pellets help remove common cooking and cleaning odours, and reduce certain VOCs.



Filter Type	Standard Filter	Pet Filter	Allergy & Flu Filter	Odour Filter
-------------	-----------------	------------	----------------------	--------------

#### Filter Order Code:

Z1000AU	AFHZ100001AU	AFHZ1000PET01		AFHZ1000SMK01
Z2000AU	AFHZ200001AU	AFHZ2000PET01	AFHZ2000AGY01	AFHZ2000SMK01
Z3000AU	AFHZ300001AU	AFHZ3000PET01	AFHZ3000AGY01	AFHZ3000SMK01

#### Filters Include:

Pre-Filter	Z1000 - N/A Z2000 & Z3000 - Washable	Washable	Durable Mesh	Durable Mesh
Carbon Filter	•	Activated Carbon	Activated Carbon	Activated Carbon
True HEPA (H13)*	Z3000 Filter Only	•	•	•

#### Replacement Carbon Filters Order Code\*\*:

Z1000	AFCZ100001AU	AFCZ1000PET01	AFCZ1000AGY01	AFCZ1000SMK01
Z2000	AFCZ200001AU	AFCZ2000PET01	AFCZ2000AGY01	AFCZ2000SMK01
Z3000	AFCZ300001AU	AFCZ3000PET01	AFCZ3000AGY01	AFCZ3000SMK01



## REPLACEMENT UV LAMP

Machine	Code
Z1000AU	UVLZ100001AU
Z2000AU	UVLZ200001AU
Z3000AU	UVLZ300001AU

\*Recommended to replace the HEPA Drum every 12 to 15 months, depending on usage.

\*\* For best results, replace carbon filter every 3 to 4 months.



# TruSens™



## Performance Series Air Purifiers

Exceptional CADR. Extraordinary lifetime value. TruSens Performance Series Air Purifiers deliver complete coverage in professional spaces with a powerful clean air delivery rate (CADR), full year\* True HEPA/Activated Carbon filtration and maintenance free TRU-BEAM™ UV-C.

\*Operating 12 hours per day, under typical operating conditions.



Z-7000

### Responds to your air

Know your air quality with the AQI display that reflects real-time air quality readings from the remote SensorPod™ and have the peace of mind that the air purifier automatically adjusts.

#### GOOD

● 0 - 50

#### MODERATE

● 50 - 100

#### POOR

● 100+



### Reduces airborne virus exposure

TruSens Performance Series Air Purifiers eliminate 99.99% of airborne viruses and bacteria including coronavirus (SARS-CoV-2) in your indoor space.\*\*

#### TRU-BEAM™ UV-C

light inactivates viruses and bacteria trapped on the filter

#### TRUE HEPA

captures airborne viruses, bacteria, and smoke

#### ACTIVATED CARBON

captures volatile organic compounds (VOCs)

#### PREFILTER

traps large particles



\*\*Results from independent third-party testing using aerosolised airborne concentration of human coronavirus 229E over a two-hour period in a sealed 30m³ test chamber. HCoV-229E is a well-established surrogate for SARS-CoV-2 (the virus that causes COVID-19).



Choose the right air purifier for your space.

See more at [www.trusens.com](http://www.trusens.com)

#### Air Purifier Model

Z-7000



Item No.	Z7000AU
Room Coverage at 2 ACH	186m²
CADR*	930 m³/h
Dimensions (W x D x H)	374 x 468 x 806 mm
Replacement Filter	AFCHZ700001

\*PM2.5 CADR on Turbo.